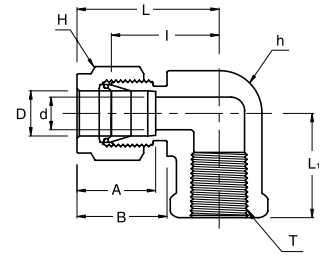


SFEI

Female Elbow



Connects Fractional Tubes To Male NPT Thread

Part No.	Tube OD D (inch)	T (NPT)	d Min	Width Across Flat		A	B	I	L	L ₁
				h (inch)	H (inch)					
SFEI - 4 - 2N	1/4	1/8	4.82	1/2	9/16	15.24	17.78	19.55	26.92	19.05
SFEI - 4 - 4N	1/4	1/4	4.82	11/16	9/16	15.24	17.78	22.35	29.71	22.35
SFEI - 4 - 6N	1/4	3/8	4.82	13/16	9/16	15.24	17.78	24.38	31.75	22.35
SFEI - 4 - 8N	1/4	1/2	4.82	1	9/16	15.24	17.78	27.17	34.54	28.44
SFEI - 6 - 2N	3/8	1/8	7.11	5/8	11/16	16.76	19.30	23.11	30.48	19.05
SFEI - 6 - 4N	3/8	1/4	7.11	11/16	11/16	16.76	19.30	23.87	31.24	22.35
SFEI - 6 - 6N	3/8	3/8	7.11	13/16	11/16	16.76	19.30	25.90	33.27	22.35
SFEI - 6 - 8N	3/8	1/2	7.11	1	11/16	16.76	19.30	28.70	36.06	28.44
SFEI - 8 - 4N	1/2	1/4	10.41	13/16	7/8	22.86	21.84	25.90	36.06	22.35
SFEI - 8 - 6N	1/2	3/8	10.41	13/16	7/8	22.86	21.84	25.90	36.06	22.35
SFEI - 8 - 8N	1/2	1/2	10.41	1	7/8	22.86	21.84	28.70	38.86	37.00
SFEI - 12 - 8N	3/4	1/2	15.74	1-1/16	1-1/8	24.38	21.84	29.71	39.87	28.44
SFEI - 12 - 12N	3/4	3/4	15.74	1-3/8	1-1/8	24.38	21.84	34.54	44.70	31.75
SFEI - 16 - 12N	1	3/4	22.35	1-3/8	1-1/2	31.24	26.41	36.83	49.02	31.75
SFEI - 16 - 16N	1	1	22.35	1-11/16	1-1/2	31.24	26.41	41.40	53.59	38.10

Connects Metric Tubes To Male ISO Tapered Thread

Part No.	Tube OD D	T (PT)	d Min	Width Across Flat		A	B	I	L	L ₁
				h	H					
SFEI - 6M - 4R	6	1/4	4.8	17.4	14	15.3	17.7	22.4	29.8	22.40
SFEI - 6M - 6R	6	3/8	4.8	20.6	14	15.3	17.7	24.4	31.7	22.40
SFEI - 6M - 8R	6	1/2	4.8	25.4	14	15.3	17.7	27.2	34.6	28.40
SFEI - 8M - 4R	8	1/4	6.4	17.4	16	16.2	18.6	23.1	30.6	22.40
SFEI - 8M - 8R	8	1/2	6.4	25.4	16	16.2	18.6	28.0	35.2	28.40
SFEI - 10M - 4R	10	1/4	7.9	17.4	19	17.2	19.5	25.9	33.5	22.40
SFEI - 10M - 6R	10	3/8	7.9	20.6	19	17.2	19.5	25.9	33.5	22.40
SFEI - 12M - 6R	12	3/8	9.5	20.6	22	22.8	22.0	25.9	36.2	22.35
SFEI - 12M - 8R	12	1/2	9.5	25.4	22	22.8	22.0	28.7	38.8	28.40



- Dimensions and Drawings are for reference only and are subject to change without prior notice.
- Unless otherwise specified, all dimensions are in millimeters.
- Sizes, pressure classes, and end connections not listed are available upon request.
- Dimensions shown with SUPERLOK nuts finger-tight, where applicable.