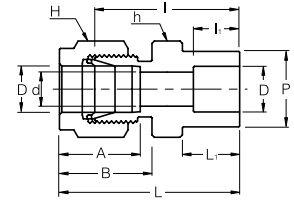


SSWCI

Tube Socket Weld
Connector



Connects Fractional Tubes

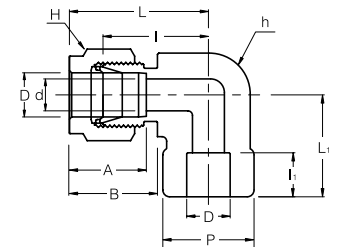
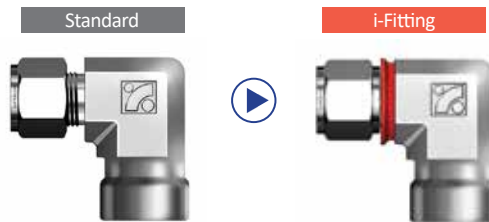
Part No.	Tube O.D. D (inch)	d Min	P	Width Across Flat		A	B	I	I ₁	L	L ₁
				h (inch)	H (inch)						
SSWCI - 4	1/4	4.82	11.17	1/2	9/16	15.24	17.78	26.16	7.87	33.52	10.41
SSWCI - 6	3/8	7.11	15.74	5/8	11/16	16.76	19.30	30.22	9.65	37.59	11.93
SSWCI - 8	1/2	10.41	19.05	13/16	7/8	22.86	21.84	30.98	12.70	41.14	11.93
SSWCI -12	3/4	15.74	26.67	1-1/16	1-1/8	24.38	21.84	33.27	14.22	43.43	11.93
SSWCI - 16	1	22.35	33.27	1-3/8	1-1/2	31.24	26.41	40.38	19.05	52.57	14.22

Connects Metric Tubes

Part No.	Tube O.D. D	d Min	P	Width Across Flat		A	B	I	I ₁	L	L ₁
				h	H						
SSWCI - 6M	6	4.8	11.17	12.7	14.3	15.2	17.7	26.2	7.9	33.5	10.4
SSWCI - 12M	12	9.5	19.05	20.6	22.2	22.8	21.8	31.0	12.7	41.1	11.9
SSWCI - 18M	18	15.1	26.67	27	28.6	24.3	21.8	33.3	14.2	43.4	11.9
SSWCI - 25M	25	21.8	33.27	34.9	38.1	31.2	26.4	40.4	19.1	52.6	14.2

SSWEI

Tube Socket Weld
Elbow



Connects Fractional Tubes

Part No.	Tube O.D. D (inch)	d Min	P	Width Across Flat		A	B	I	I ₁	L	L ₁
				h (inch)	H (inch)						
SSWEI - 4	1/4	4.82	12.70	1/2	9/16	15.24	17.78	19.55	7.87	26.92	19.55
SSWEI - 6	3/8	7.11	15.75	5/8	11/16	16.76	19.30	23.11	9.65	30.48	23.11
SSWEI - 8	1/2	10.41	20.57	13/16	7/8	22.86	21.84	25.90	12.70	36.06	25.90
SSWEI - 12	3/4	15.74	26.92	1-1/16	1-1/8	24.38	21.84	29.71	14.22	39.87	29.71
SSWEI - 16	1	22.35	35.05	1-3/8	1-1/2	31.24	26.41	36.83	19.05	49.02	36.83

Connects Metric Tubes

Part No.	Tube O.D. D	d Min	P	Width Across Flat		A	B	I	I ₁	L	L ₁
				h	H						
SSWEI - 6M	6	4.8	12.70	12.7	14.3	15.2	17.7	19.6	7.9	26.9	19.6
SSWEI - 12M	12	9.5	20.57	20.6	22.2	22.8	21.8	25.9	12.7	36.1	25.9
SSWEI -18M	18	15.1	26.92	27	28.6	24.3	21.8	29.7	14.2	39.9	29.7
SSWEI - 25M	25	21.8	35.05	34.9	38.1	31.2	26.4	36.8	19.1	49.0	36.8



- Dimensions and Drawings are for reference only and are subject to change without prior notice.
- Unless otherwise specified, all dimensions are in millimeters.
- Sizes, pressure classes, and end connections not listed are available upon request.
- Dimensions shown with SUPERLOK nuts finger-tight, where applicable.