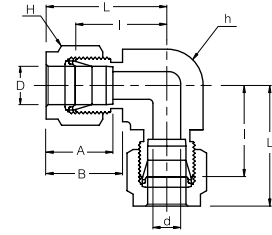


SUEI Union Elbow

Standard



i-Fitting



Connects Fractional Tubes

Part No.	Tube OD D (inch)	d Min	Width Across Flat		A	B	I	L
			h (inch)	H (inch)				
SUEI - 4	1/4	4.82	1/2	9/16	15.24	17.78	20.10	27.40
SUEI - 6	3/8	7.11	5/8	11/16	16.76	19.30	23.11	30.48
SUEI - 8	1/2	10.41	13/16	7/8	22.86	21.84	25.90	36.06
SUEI - 12	3/4	15.74	1-1/16	1-1/8	24.38	21.84	29.71	39.87
SUEI - 16	1	22.35	1-3/8	1-1/2	31.24	26.41	36.83	49.02

Connects Metric Tubes

Part No.	Tube OD D	d Min	Width Across Flat		A	B	I	L
			h	H				
SUEI - 6M	6	4.8	12.7	14	15.3	17.7	19.6	27.0
SUEI - 8M	8	6.4	15.9	16	16.2	18.6	22.4	29.9
SUEI - 10M	10	7.9	17.5	19	17.2	19.5	23.9	31.5
SUEI - 12M	12	9.5	20.6	22	22.8	22.0	25.9	36.0
SUEI - 16M	16	12.7	23.8	25	24.4	22.0	27.9	38.0
SUEI - 18M	18	15.1	27.0	30	24.4	22.0	29.7	39.8
SUEI - 20M	20	15.9	34.9	32	26.0	22.0	34.5	44.6
SUEI - 25M	25	21.8	34.9	38	31.3	26.5	36.8	49.1



- Dimensions and Drawings are for reference only and are subject to change without prior notice.
- Unless otherwise specified, all dimensions are in millimeters.
- Sizes, pressure classes, and end connections not listed are available upon request.
- Dimensions shown with SUPERLOK nuts finger-tight, where applicable.