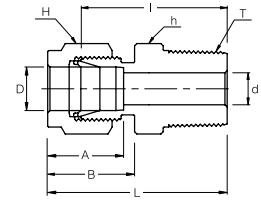
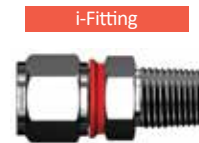
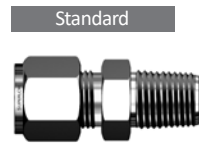


SMCI
Male Connector



Connects Fractional Tube To Female NPT Thread

Part No.	Tube OD D (inch)	T (NPT)	d Min	Width Across Flat		A	B	I	L
				h (inch)	H (inch)				
SMCI - 4 - 6N	1/4	3/8	4.82	11/16	9/16	15.24	17.78	30.98	38.35
SMCI - 4 - 8N	1/4	1/2	4.82	7/8	9/16	15.24	17.78	37.33	44.70
SMCI - 6 - 4N	3/8	1/4	7.11	5/8	11/16	16.76	19.30	32.51	39.87
SMCI - 6 - 6N	3/8	3/8	7.11	11/16	11/16	16.76	19.30	32.51	39.87
SMCI - 6 - 8N	3/8	1/2	7.11	7/8	11/16	16.76	19.30	38.86	46.22
SMCI - 8 - 4N	1/2	1/4	7.11	13/16	7/8	22.86	21.84	33.27	43.43
SMCI - 8 - 6N	1/2	3/8	9.65	13/16	7/8	22.86	21.84	33.27	43.43
SMCI - 8 - 8N	1/2	1/2	10.41	7/8	7/8	22.86	21.84	38.86	49.02
SMCI - 8 - 12N	1/2	3/4	10.41	1-1/16	7/8	22.86	21.84	40.38	50.54
SMCI - 12 - 12N	3/4	3/4	15.74	1-1/16	1-1/8	24.38	21.84	40.38	50.54
SMCI - 16 - 16N	1	1	22.35	1-3/8	1-1/2	31.24	26.41	50.03	62.23

Connects Metric Tube To Female ISO Tapered Thread

Part No.	Tube OD D	T (PT)	d Min	Width Across Flat		A	B	I	L
				h	H				
SMCI - 6M - 2R	6	1/8	4.8	14	14	15.3	17.7	25.4	32.8
SMCI - 6M - 4R	6	1/4	4.8	14	14	15.3	17.7	30.5	37.9
SMCI - 6M - 6R	6	3/8	4.8	18	14	15.3	17.7	31.0	38.4
SMCI - 8M - 4R	8	1/4	6.4	15	16	16.2	18.6	31.2	38.7
SMCI - 8M - 6R	8	3/8	6.4	18	16	16.2	18.6	31.8	39.3
SMCI - 8M - 8R	8	1/2	6.4	22	16	16.2	18.6	38.1	45.6
SMCI - 10M - 6R	10	3/8	7.9	18	19	17.2	19.5	33.3	40.9
SMCI - 10M - 8R	10	1/2	7.9	22	19	17.2	19.5	38.9	46.5
SMCI - 12M - 8R	12	1/2	9.5	22	22	22.8	22.0	38.9	49.0
SMCI - 12M - 12R	12	3/4	9.5	27	22	22.8	22.0	40.4	50.5
SMCI - 16M - 8R	16	1/2	11.9	24	25	24.4	22.0	38.9	49.0
SMCI - 16M - 12R	16	3/4	12.7	27	25	24.4	22.0	40.4	50.5
SMCI - 18M - 8R	18	1/2	11.9	27	30	24.4	22.0	40.4	50.5
SMCI - 18M - 12R	18	3/4	15.1	27	30	24.4	22.0	40.4	50.5
SMCI - 20M - 8R	20	1/2	11.9	30	32	26.0	22.0	42.2	52.3
SMCI - 20M - 12R	20	3/4	15.9	30	32	26.0	22.0	42.2	52.3
SMCI - 25M - 12R	25	3/4	15.9	35	38	31.3	26.5	45.2	57.5
SMCI - 25M - 16R	25	1	21.8	35	38	31.3	26.5	50.0	62.3



- Dimensions and Drawings are for reference only and are subject to change without prior notice.
- Unless otherwise specified, all dimensions are in millimeters.
- Sizes, pressure classes, and end connections not listed are available upon request.
- Dimensions shown with SUPERLOK nuts finger-tight, where applicable.